



**AUSTRALIAN
CHRISTIAN COLLEGE**

Hume
2016 Annual Report

Introduction

This Annual Report provides an overview of various aspects of school life in 2016. The report is published in accordance with Federal and State government compliance requirements and gives information for the benefit of government compliance, parents and the community.

Workforce Composition

The school employed one full-time teacher and two part-time teachers.

There was one full-time Administrator throughout the year.

Other part time and casual staff assisted as Teacher's Aides, Kindergarten Teacher, Kindergarten Assistant, Ground Maintenance and Casual Relief Teachers.

In 2016, the staff attendance rate was 97%.

There were no indigenous teachers at school in 2016.

Teacher Standards and Qualifications

Name	Role	Registration	Qualifications	Class
Norm Fitzgerald (full-time)	Teacher/Principal	Full Registration #176183	B.Mus.(Hons), B.A., Dip. Teaching, A.T.C.L.	Years 3 - 6 (0.8 class time)
Suzanne Roe (part-time 0.8)	Teacher	Permission to Teach (General Primary) #343287	Dip. Teaching	Prep - Year 2 (0.8 class time)
Leah Bosch (part-time 0.7)	Teacher	Full Registration #374313	B.A., Grad. Dip. Ed.	Prep - Year 2 (0.5 class time) Years 3 - 6 (0.2 class time)
Judy Lam (part-time 0.2)	Teacher	Full Registration #398724	B.Environments, Grad. Dip. Teaching	Prep - Year 2 (0.1 class time) Years 3 - 6 (0.1 class time)

Professional Development

In 2016, staff attended the following Professional Developments:

- In Safe Hands (Child Safety) – all staff
- First Aid Level 1, Asthma and Anaphylaxis – all staff
- ACC Schools Leaders Forum, Brisbane – Principal
- Child Safe Standards – Principal
- Agency of the Child – Principal
- NAPLAN Workshop – Senior Class Teacher
- Safe Churches Seminar – Principal
- Tomorrow Today Foundation – Teachers
- Literacy CAFÉ 2 day in-house PD with Literacy Coordinator – Teachers
- Beyond 'Telling Off' -Positive Behaviour Management School Program – Teacher
- Self Regulation Development: Strategies for working with Children and Parents - Teachers

Total cost of Professional Development in 2016 was \$3770.

ACC allocates approx. \$600 per staff member per school year for ongoing professional development.

Student Enrolment

There were two classes at school: The Junior Class consisted of Prep-Yr2 students and the Senior Class covered Yr3-6. The Junior Class was separated for Literacy and Numeracy into a Prep Class and Year 1-2 Class, three days per week.

The enrolment according to Census Data in 2016 was as follows:

Class	February 2016	August 2016
Prep	9	9
Year 1	7	7
Year 2	6	7
Year 3	9	9
Year 4	4	3
Year 5	9	8
Year 6	2	2
TOTAL	46	45

Student Attendance

Student attendance in 2016 was as follows:

Class	Attendance
Prep	96%
Year 1	91%
Year 2	94%
Year 3	91%
Year 4	92%
Year 5	92%
Year 6	89%
School Average	92%

Total attendance trends over the last three years in percentage form:

2016	2015	2014
92%	93%	97%

The attendance figures show a decrease between 2015 and 2016. Attendance was affected by family holidays held during term, transport difficulties for families living outside Benalla and sickness.

The school monitors attendance and absences throughout the day: at roll call held between at the commencement of the day through a sign-in and sign-out procedure for the rest of the day. Attendance and absences were recorded on Quickschools. A note from the parent/guardian is required for absences giving the reason for the absence for full day absences. Part or half day absences are recorded in the sign-in book with reasons given. Notes are kept on file. Absences that are not accounted for within a few days are followed up with a phone call to parents.

Parents receive a summary of days absent twice per year with their Student Report.

Student Outcomes

The National Assessment Program - Literacy and Numeracy (NAPLAN) assesses all students in Australian schools in Years 3, 5, 7 and 9.

The school participated in NAPLAN. Due to the small number of students sitting, the school did not meet the reporting threshold in 2016. School results, therefore, have not been published. In 2016, there were seven Year 3 students and nine Year 5 students registered at the school during the NAPLAN testing period.

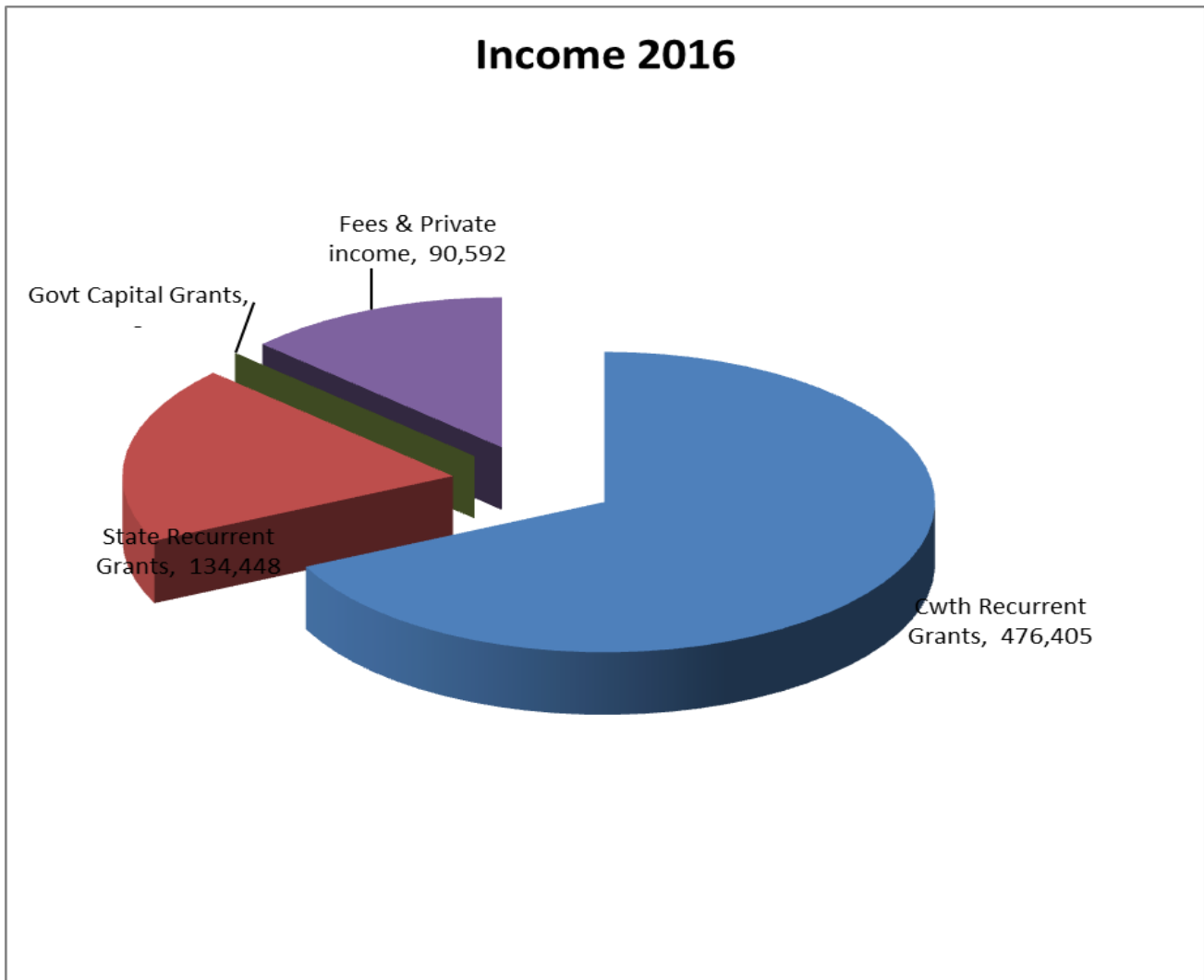
ACC Hume is a P-6 school. No information is applicable for standardised assessment results for Year 9 and 10 students, senior secondary outcomes, the proportion of Year 9 students retained to Year 12 and post-school destinations.

Student, Parent and Teacher Satisfaction

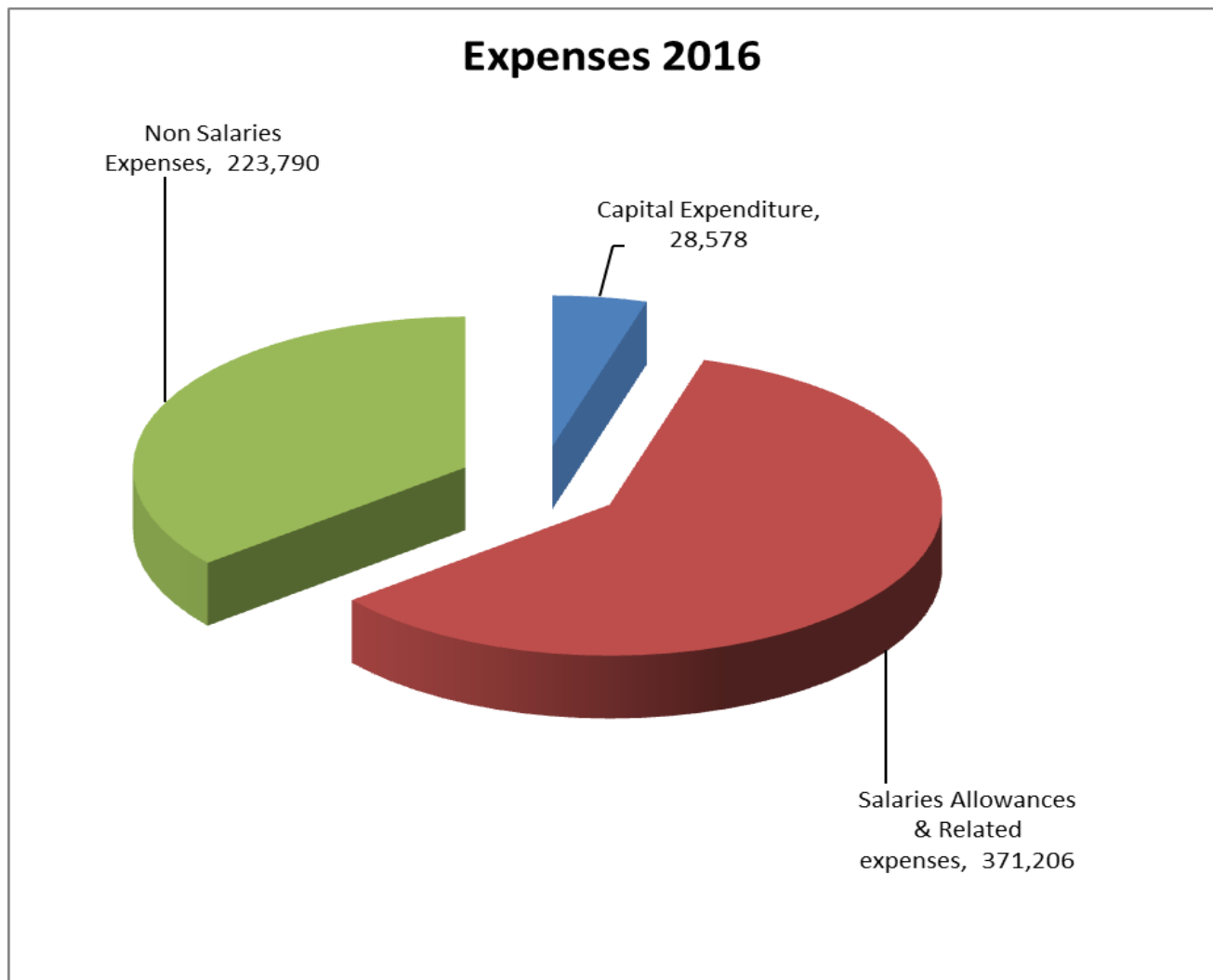
In response to the School's performance in 2016:

- Parent Surveys were handed out to nineteen of our families in attendance in 2016. No concerns were raised relating to the 2016 school year by the nineteen surveyed. The majority of conversations with parents throughout the year were positive. Some parents with concerns were given opportunity to present their grievances and their points of view were noted.
- Sixteen students were surveyed. The majority viewed their school year favourably. Activities particularly enjoyed were: being with friends; casual dress days; activities during recess and lunchtime; and the Swimming and Camping Programs. The Flying Fox proved controversial with some for, and some against. Due to safety concerns, the Flying Fox has not been reinstated. Suggested improvements to the school grounds included repainting down-ball courts.
- All staff, including, the three teaching staff members other than the Principal, attended six monthly Staff Appraisal interviews. Staff indicated high satisfaction with the operation of the school and support given.

Income by Funding Source



Financial Activities



Report Availability

Copies of this report can be found:

1. On the Victorian State Register.
2. On the Australian Christian College - Hume website: www.acc.edu.au
3. At the Australian Christian College - Hume office: 21 Sydney Rd, Benalla, Victoria.