



**AUSTRALIAN
CHRISTIAN COLLEGE**

Hume
2015 Annual Report

Australian Christian College – Hume

Reg. No. 2086:

Annual Report for 2015

Introduction

This Annual Report provides an overview of various aspects of school life in 2015. The report is published in accordance with Federal and State government compliance requirements and gives information for the benefit of government compliance, parents and the community.

Workforce Composition

The school employed one full-time teacher and two part-time teachers.

There was one full-time Administrator throughout the year.

Other part time and casual staff assisted as Teacher's Aides, Kindergarten Assistant, Ground Maintenance and Casual Relief Teachers.

In 2015, the staff attendance rate was 98%.

There were no indigenous teachers at school in 2015.

Teacher Standards and Qualifications

Name	Role	Registration	Qualifications	Class
Norm Fitzgerald (full-time)	Teacher/Principal	Full Registration #176183	B.Music.(Hons), B.A., Dip. Teaching, A.T.C.L.	Years 3 – 6 (0.8 class time)
Suzanne Roe (part-time 0.8)	Teacher	Permission to Teach (General Primary) #343287	Dip. Teaching	Prep – Year 2 (0.8 class time)
Judy Lam (part-time 0.6)	Teacher	Provisional/Full Registration (Full Registration gained during Term 4) #398724	B.Environments, Grad. Dip. Teaching	Prep – Year 2 (0.3 Junior Class time) Years 3 – 6 (0.3 Senior Class time)

Professional Development

In 2015, staff attended the following Professional Developments:

- ACC Schools 2 Day Conference, Qld – all Teaching and Admin staff
- Stitches First Aid: CPR, Asthma and Anaphylaxis – all staff
- 2 Day MiniLit Training – Junior Class Teacher
- Reading Tutor Training – Senior Class Teacher
- MultiLit in-house training for Teacher's Aides
- CAFÉ Approach to Literacy – Junior and Senior Class Teacher in-house Training with ACC Literacy Coordinator
- Accelerative Integrated Methodology Conference – Language Teacher

Total cost of Professional Development in 2015 was \$3040.

ACC allocates approx. \$600 per staff member per school year for ongoing professional development.

Student Enrolment

There were two classes at school: the Junior Class consisted of Prep-Yr2 students and the Senior Class covered Yr3-6.

The enrolment in 2015 was as follows, according to Census data:

Class	February 2015	August 2015
Prep	9	9
Year 1	5	4
Year 2	10	9
Year 3	2	3
Year 4	9	7
Year 5	2	3
Year 6	2	0
TOTAL	39	35

Student Attendance

Student attendance in 2015 was as follows:

Class	Attendance
Prep	94%
Year 1	95%
Year 2	91%
Year 3	94%
Year 4	93%
Year 5	94%
Year 6	N/A
TOTAL	93%

Total attendance trends over the last three years in percentage form:

2015	2014	2013
93%	97%	95%

The attendance figures shows a decrease between 2014 and 2015. Attendance was affected by family holidays held during term and sickness.

The school monitors attendance and absences throughout the day: at roll call held between at the commencement of the day through a sign-in and sign-out procedure for the rest of the day. Attendance and absences were recorded on Quickschools. A note from the parent/guardian is required for absences giving the reason for the absence for full day absences. Part or half day absences are recorded in the sign-in book with reasons given. Notes are kept on file. Absences that are not accounted for within a few days are followed up with a phone call to parents.

Parents receive a summary of days absent twice per year with their Student Report.

Student Outcomes

The National Assessment Program - Literacy and Numeracy (NAPLAN) assesses all students in Australian schools in Years 3, 5, 7 and 9.

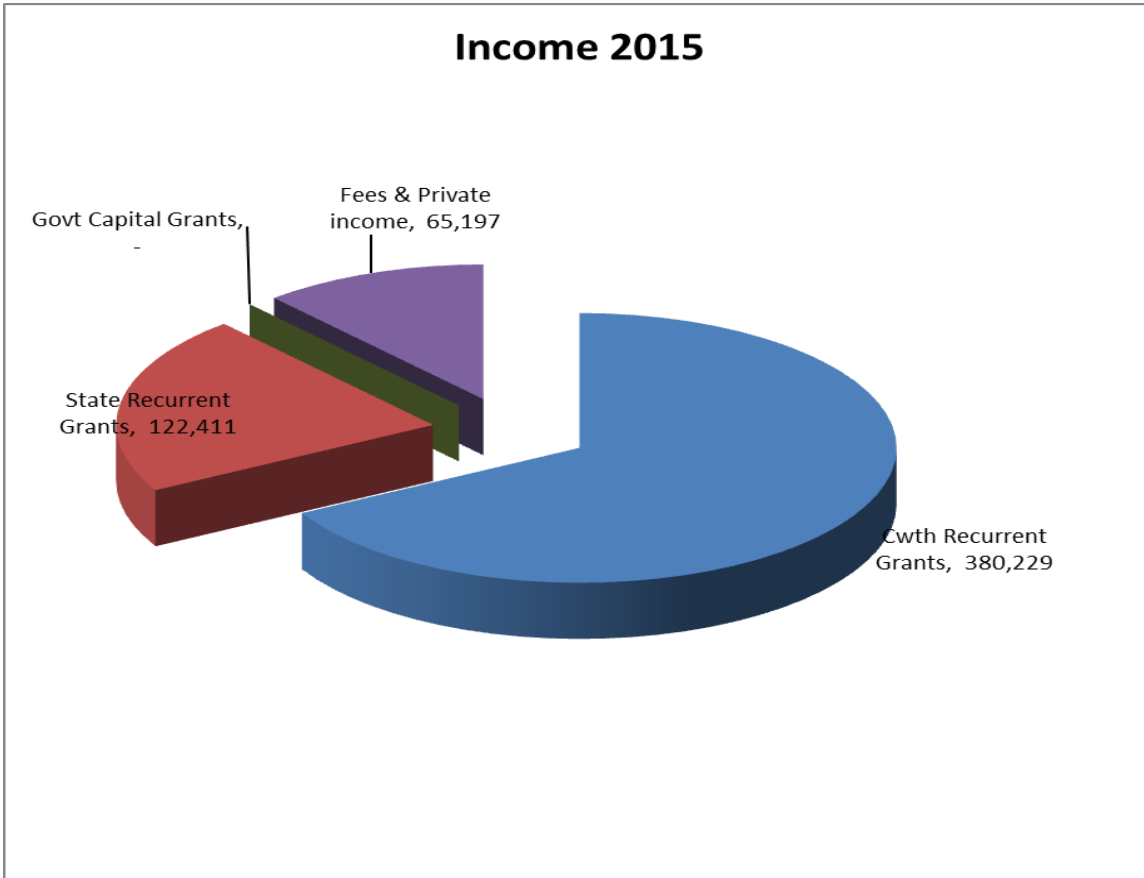
The school participated in NAPLAN. Due to the small number of students sitting, the school did not meet the reporting threshold in 2015. School results, therefore, have not been published. In 2015, there were three Year 3 students and three Year 5 students registered at the school during the NAPLAN testing period.

ACC Hume is a P-6 school. No information is applicable for standardised assessment results for Year 9 and 10 students, senior secondary outcomes, the proportion of Year 9 students retained to Year 12 and post-school destinations.

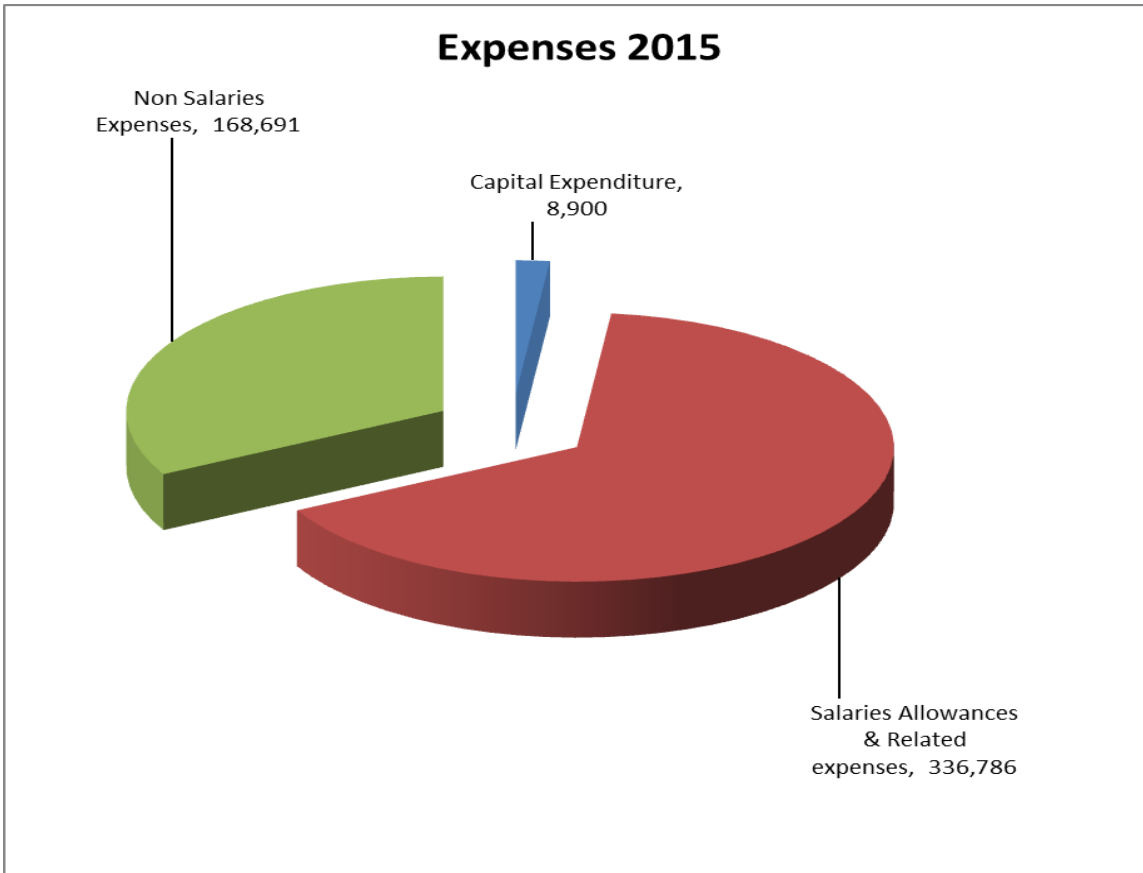
Student, Parent and Teacher Satisfaction

In response to the School's performance in 2015:

- Parent Surveys were handed out to twelve of our fifteen families in attendance in 2015. Three were returned by the due date. All reflected high satisfaction of the school. No concerns were raised relating to the 2015 school year. General conversations with parents throughout the year were positive with some concerns raised regarding the implementation of iPad technology in years to come. Discussions to address these concerns are ongoing.
- 19 students were surveyed. The majority viewed their school year favourably. Activities particularly enjoyed were the Swimming Program and Excursions. Suggested improvements included returning the Flying Fox to the Playground and installing Australian Rules Football posts. Three students raised individual concerns and all were addressed.
- All staff, including, the two teaching staff other than the Principal, attended six monthly Staff Appraisal interviews. Both indicated high satisfaction with the operation of the school and support given.



Financial Activities



Report Availability

Copies of this report can be found:

1. On the Victorian State Register.
2. On the Australian Christian College – Hume website: www.acc.edu.au
3. At the Australian Christian College – Hume office: 21 Sydney Rd, Benalla, Victoria.